

Holiday Schedule

When a holiday falls on a weekday, your collection day will be on a one-day delay. If a holiday falls on a weekend, there will be no service delay. Service days prior to the holiday will not be affected: please place your container out on your regularly scheduled service day.

DECEMBER							JANUARY							FEBRUARY							MARCH						
S	M	T	W	T	F	S	S	M	T	W	T	F	S	S	M	T	W	T	F	S	S	M	T	W	T	F	S
					1	2	1	2	3	4	5	6						1	2	3						1	2
3	4	5	6	7	8	9	7	8	9	10	11	12	13	4	5	6	7	8	9	10	3	4	5	6	7	8	9
10	11	12	13	14	15	16	14	15	16	17	18	19	20	11	12	13	14	15	16	17	10	11	12	13	14	15	16
17	18	19	20	21	22	23	21	22	23	24	25	26	27	18	19	20	21	22	23	24	17	18	19	20	21	22	23
24	25	26	27	28	29	30	28	29	30	31				25	26	27	28	29			24	25	26	27	28	29	30
31																					31						

APRIL							MAY							JUNE							JULY						
S	M	T	W	T	F	S	S	M	T	W	T	F	S	S	M	T	W	T	F	S	S	M	T	W	T	F	S
1	2	3	4	5	6		5	6	7	8	9	10	11	2	3	4	5	6	7	8	1	2	3	4	5	6	
7	8	9	10	11	12	13	12	13	14	15	16	17	18	9	10	11	12	13	14	15	7	8	9	10	11	12	13
14	15	16	17	18	19	20	19	20	21	22	23	24	25	16	17	18	19	20	21	22	14	15	16	17	18	19	20
21	22	23	24	25	26	27	26	27	28	29	30	31		23	24	25	26	27	28	29	21	22	23	24	25	26	27
28	29	30												30							28	29	30	31			

AUGUST							SEPTEMBER							OCTOBER							NOVEMBER										
S	M	T	W	T	F	S	S	M	T	W	T	F	S	S	M	T	W	T	F	S	S	M	T	W	T	F	S				
					1	2	3	1	2	3	4	5	6	7						1	2	3	4	5						1	2
4	5	6	7	8	9	10	8	9	10	11	12	13	14	6	7	8	9	10	11	12	3	4	5	6	7	8	9				
11	12	13	14	15	16	17	15	16	17	18	19	20	21	13	14	15	16	17	18	19	10	11	12	13	14	15	16				
18	19	20	21	22	23	24	22	23	24	25	26	27	28	20	21	22	23	24	25	26	17	18	19	20	21	22	23				
25	26	27	28	29	30	31	29	30						27	28	29	30	31			24	25	26	27	28	29	30				

CARDS HOLIDAYS

■ Holiday

- Jan 1 — New Year's Day
- May 27 — Memorial Day
- Jul 4 — Independence Day
- Sep 2 — Labor Day
- Nov 28 — Thanksgiving Day
- Dec 25 — Christmas Day

FAQ

What day is my service?

Please review the map on the inside of this brochure for details on your neighborhood's service day. You can use an interactive map at: www.ParisTexas.gov/TrashPickup

Trash Pickup

Residential trash service is a breeze with CARDS. We'll provide you with a new cart to use. All you need to do is bag your trash, place it into your CARDS cart, and set the cart out on trash day. Our 96-gallon carts hold about 6-7 kitchen bags of trash - plenty for most households, but you can subscribe to additional carts if you need them.

Service is weekly - except in the case of inclement weather. You will be notified of any changes to the schedule via robocall and social media posts.

Commercial Waste Service

CARDS takes pride in partnering with local businesses to assist in making sure your business waste is disposed of responsibly. We offer a variety of dumpster sizes.

Please be on the lookout for more important information about commercial services coming exclusively starting September 1, 2024.

How do I rent a dumpster or roll-off container?

CARDS offers temporary roll-off dumpster containers that are the perfect solution for your next big project. Whether you are remodeling your home or conducting a major home clean-out, we offer several different sizes to meet your needs. To reserve one, visit cardsrecycling.com/roll-off-containers/or request one via email at cityofparis@cardsrecycling.com.

THE CITY OF Paris, TX

CURBSIDE COLLECTION GUIDELINES



SERVICE BEGINS February 5, 2024

For Service Information:

Please visit our landing page www.ParisTexas.gov/TrashPickup to view the service map for your neighborhood prior to February 5th.



Contact Us:



GUIDELINES

- Have your poly cart(s) set out for collection the night before your collection day. You may place your cart(s) out as early as 6 p.m. the night prior.
- Place cart(s) at least three feet apart from other carts, mailboxes, vehicles, utility meters, poles, fences, etc.
- Trash items MUST be bagged with the cart lid closed to prevent spillage.
- Consider breaking down cardboard boxes to save space.
- All trash must be inside the container. Items outside of the container will not be collected (Excluding bulk collection)

This service begins February 5. Carts will start appearing in neighborhoods prior to then, but the first scheduled service day will be 2/5/2024.

- You may need an additional cart. Contact City of Paris at wateroffice@paristexas.gov to subscribe to an additional cart for \$7 per month.
- Other services, like commercial or industrial waste collection, temporary roll-off containers may be requested.
- Please email us at cityofparis@cardsrecycling.com to inquire about pricing and availability.

THINGS TO KNOW

Missed Pickup

If your trash was out by 7a.m. on pickup day and was not collected by the end of the day (7 p.m.), email CARDS at cityofparis@cardsrecycling.com.

Stay in Touch with CARDS

- **Visit:** cardsrecycling.com
- **Email:** info@cardsrecycling.com OR cityofparis@cardsrecycling.com
- **Call:** 877-592-2737
- **Follow:** @CARDSHoldings

Bulk Collection

Bulky waste will be collected on your regular service day. You are limited to three (3) cubic yards of bulky waste per pickup. Place all bulky waste next to your trash cart(s) no later than 7:00 a.m. on your designated service day.

Bulky Waste - Acceptable

- Toys and Yard Tools Tagged as "Bulk Item"
- Furniture
- Bundled Carpet in 4-foot Lengths
- Fence Panels No Larger than 4'x6'
- Washing Machines, Dryers, Water Heaters & Kitchen Appliances
- Refrigerators/Freezers (Must be tagged certifying removal of refrigerants)
- Additional Trash Bags

Bulky Waste - Prohibited

- Commercial Construction and Remodeling Debris
- Household Hazardous Waste
- Tires, Batteries, and Propane Tanks
- Loose Debris (Debris must be placed in a box or other container no larger than 2'x2'x4' and weighing no more than 50 pounds.)

YOUR SERVICE DAY

Yard Waste

 Yard waste will be collected **every week on your service day**

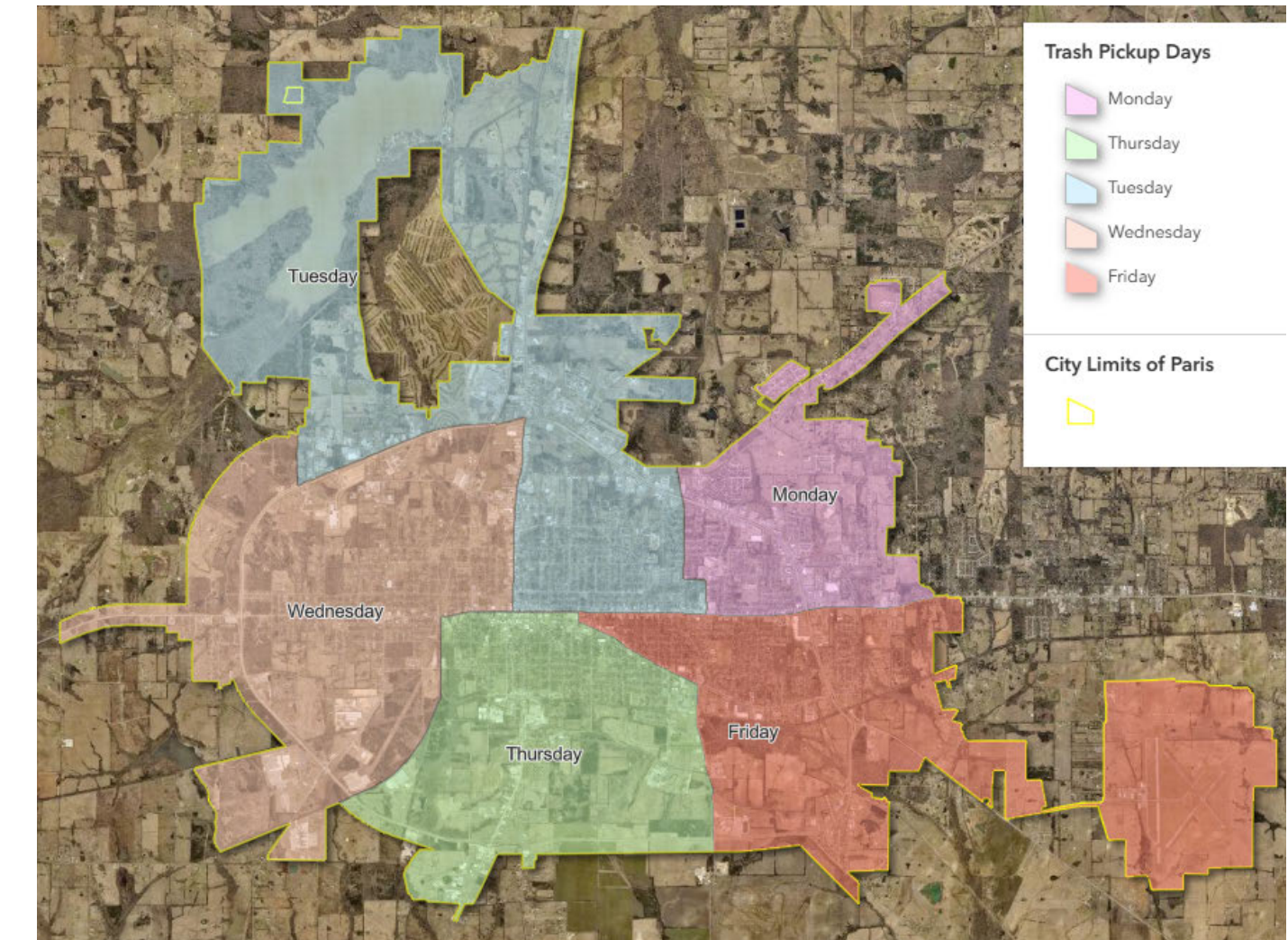
Loose yard waste and lawn trimmings must be placed in biodegradable brown kraft bags and set out for pickup.

Tied & Bundled Brush

Brush not contained in kraft bags must be tied and bundled and set out without obstructing the sidewalk. Individual bundles should weigh no more than 50 lbs., and be no longer than four (4) feet.

Finding Your Day

Use the map below to see when your neighborhood will have trash pickup. Or use www.ParisTexas.gov/TrashPickup to enter your address and find your service day!



CURBSIDE CONTAINER PLACEMENT GUIDE



Place containers at the curb the night before pickup day.

CONTAINER DON'TS



Containers must remain upright for pickup



Keep all materials inside the container



Do not place containers back-to-back



Keep container clear of all obstructions

